

R.b. od 1-2

Dongé Seb k.č. 1043/2 i 1288



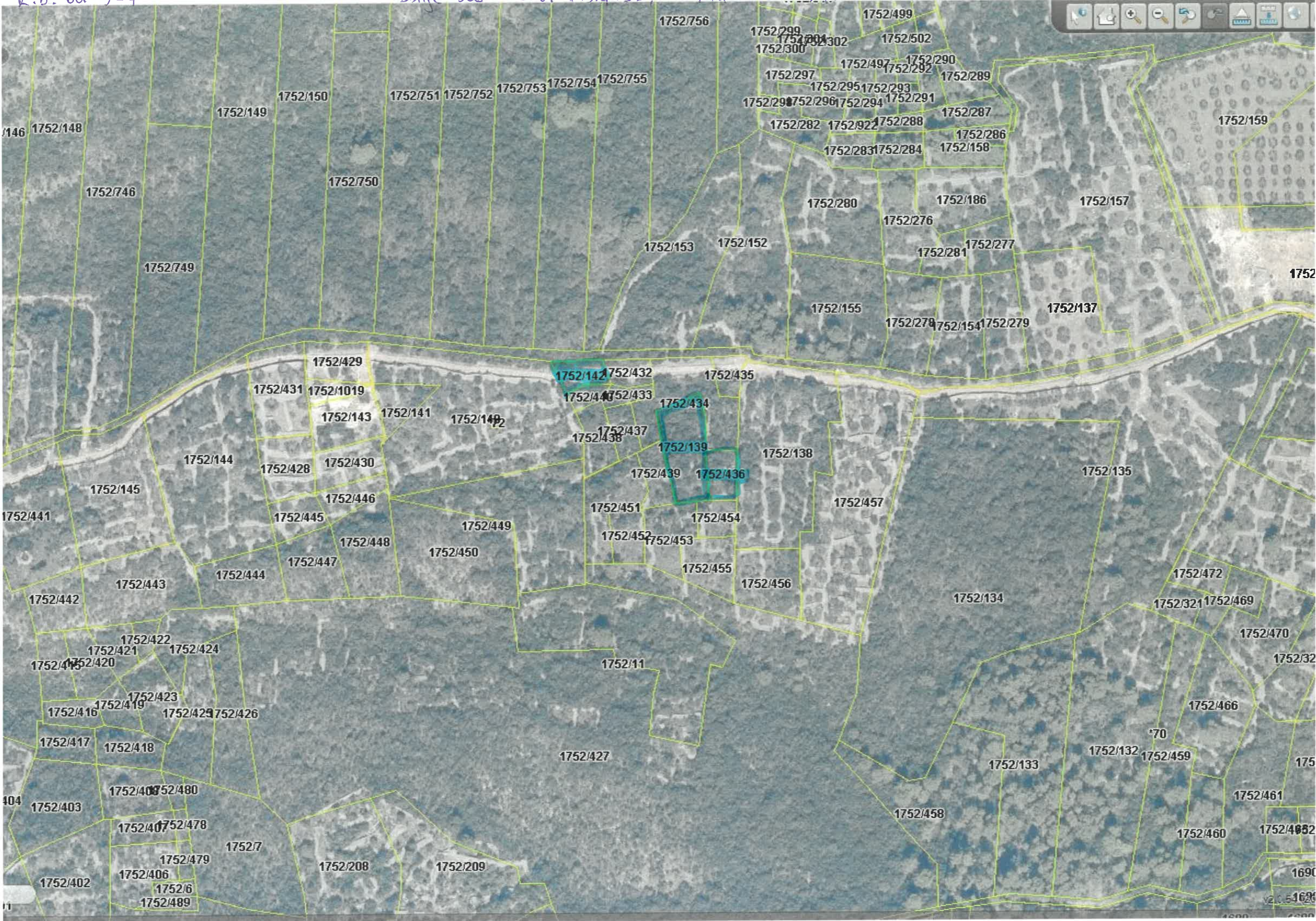
R.b. od 3-4

Donj selo k.č. 1597/13 i 1597/3



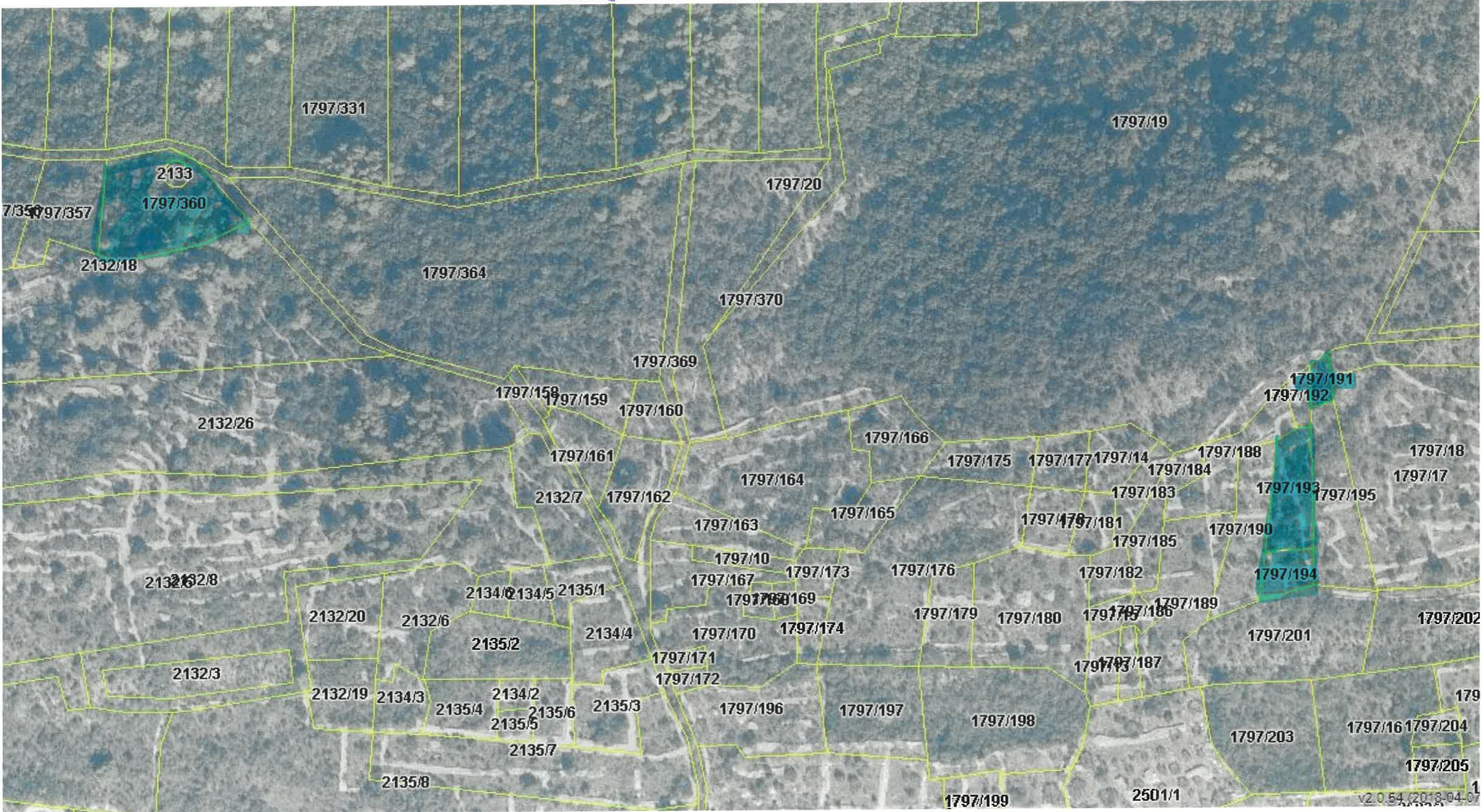
R.b. od 5-7

Donje selo k.o. 1752/139 1752/142 i 1752/143G



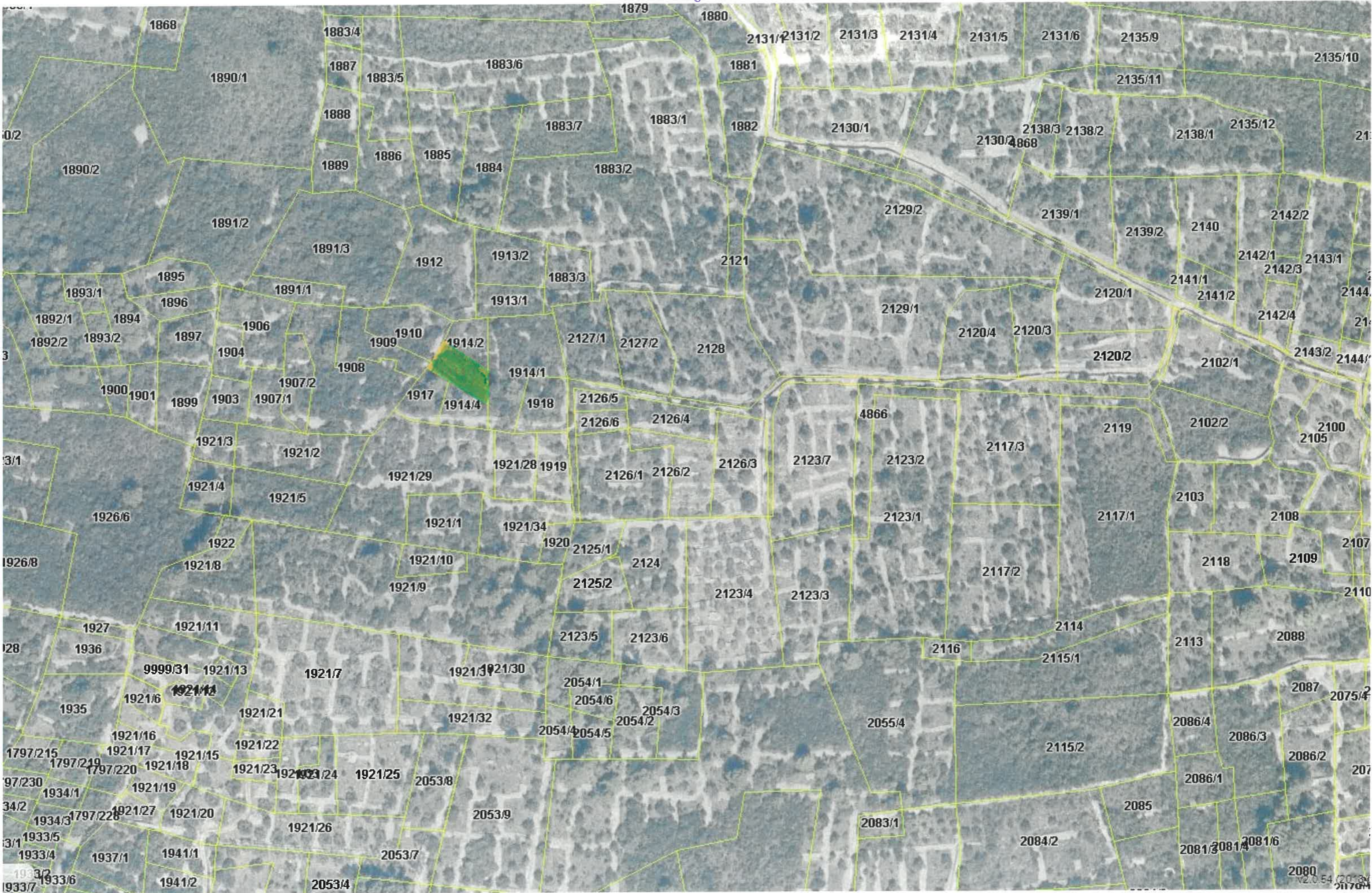
l.b. od 8-12

Donje selo k.c. 1797/191; 1797/193; 1797/194 i 1797/360



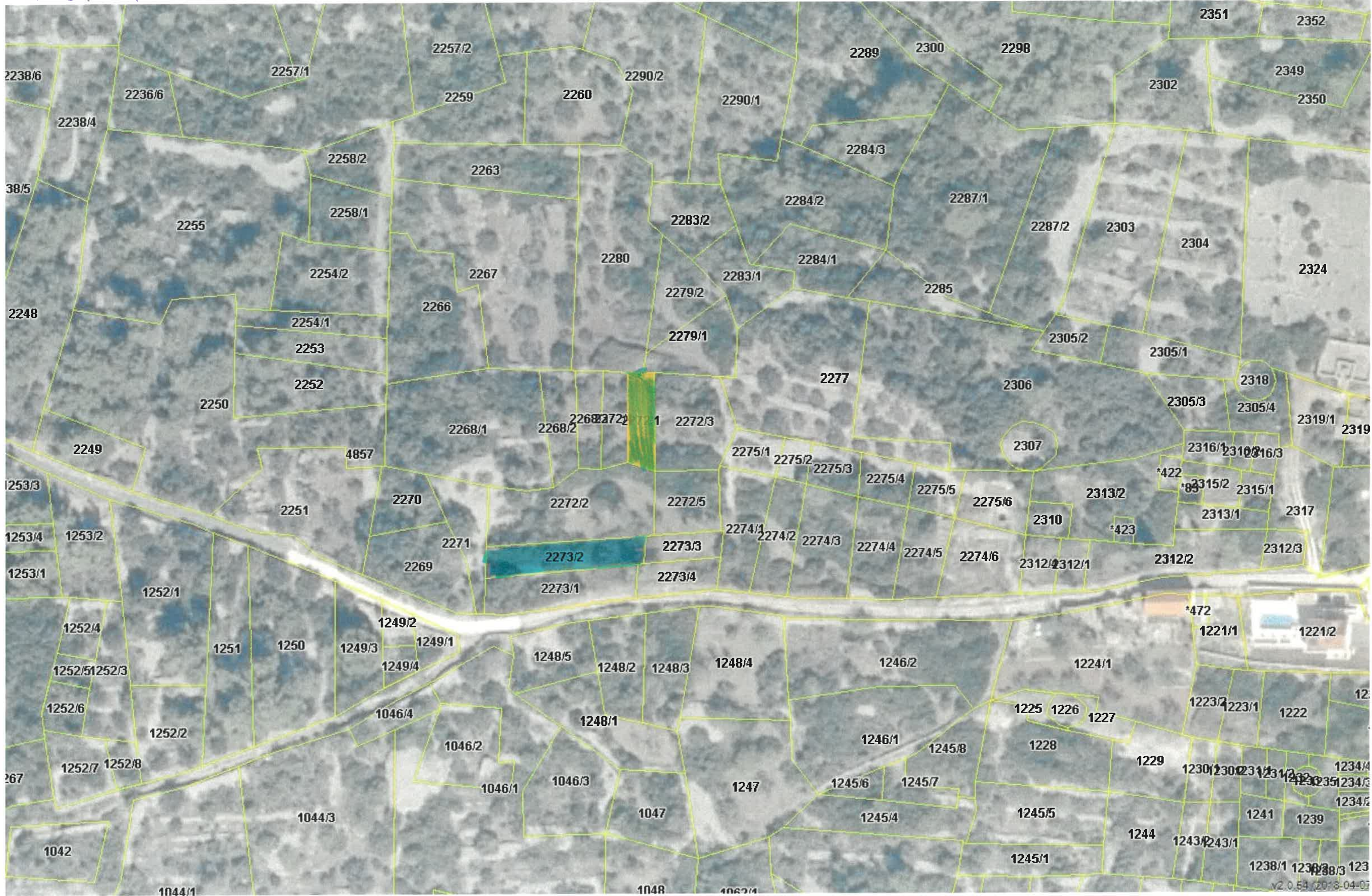
R.b. 13

Dong seos k.c. 1914/3



R.B. 14. i 15

Donje selo k.č. 2272/1 i 2273/2



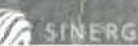
R.B. 16 i 17

Donye Seow k. c. 356 i 367/1



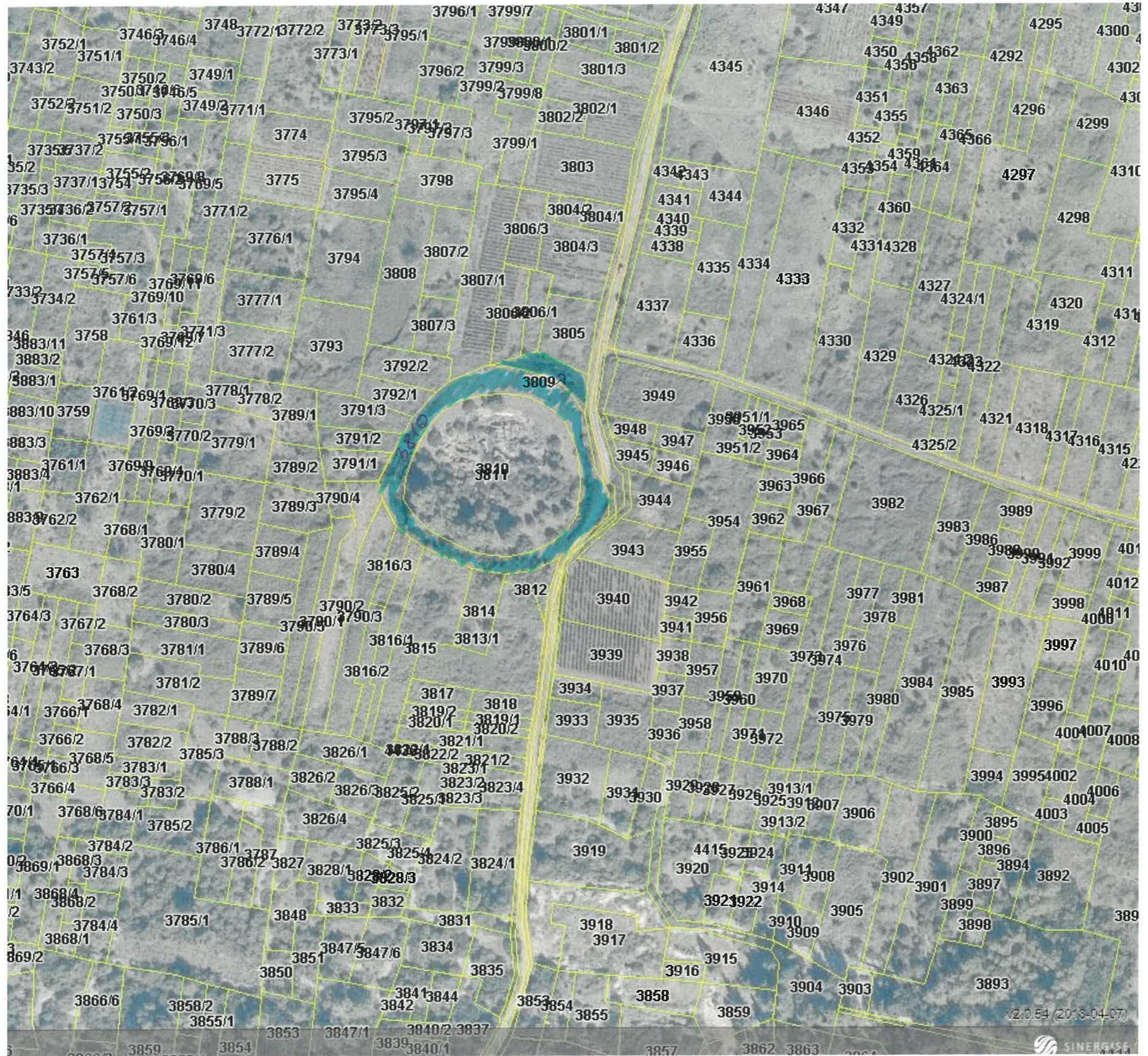
43°23'45.55" N 16°12'38.98" E

v2.0.54 (2018-04-



R.B. 18; 19

Dong side
K.C. 3807; 3810



R.B. 20-23

Danj'le E.O. 3884/3; 3884/4, 3893/1
3910/3; 3910/5

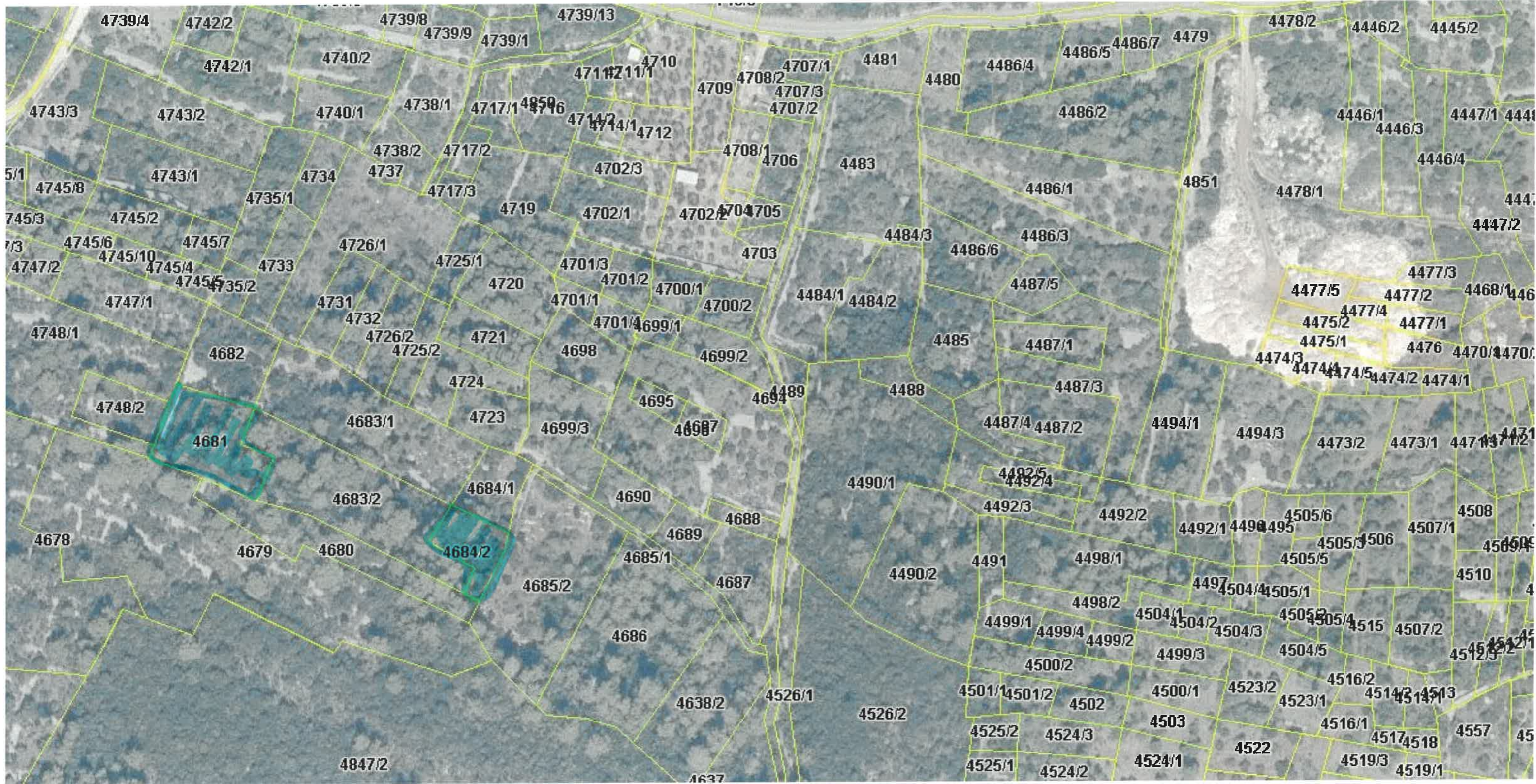


R.B. 24-26 Dong See E.E. 3974/4, 3974/6 i 3974/7



R.B. ~~27~~ 27 i 28

Dongi Seb 40. 4681 i 4684/2



R.B. 29-31

Dangj slo k.c. 4775, 4790 i 4809



R.B. 32 i 33

Dong... selo k.e. 7511 i 7514



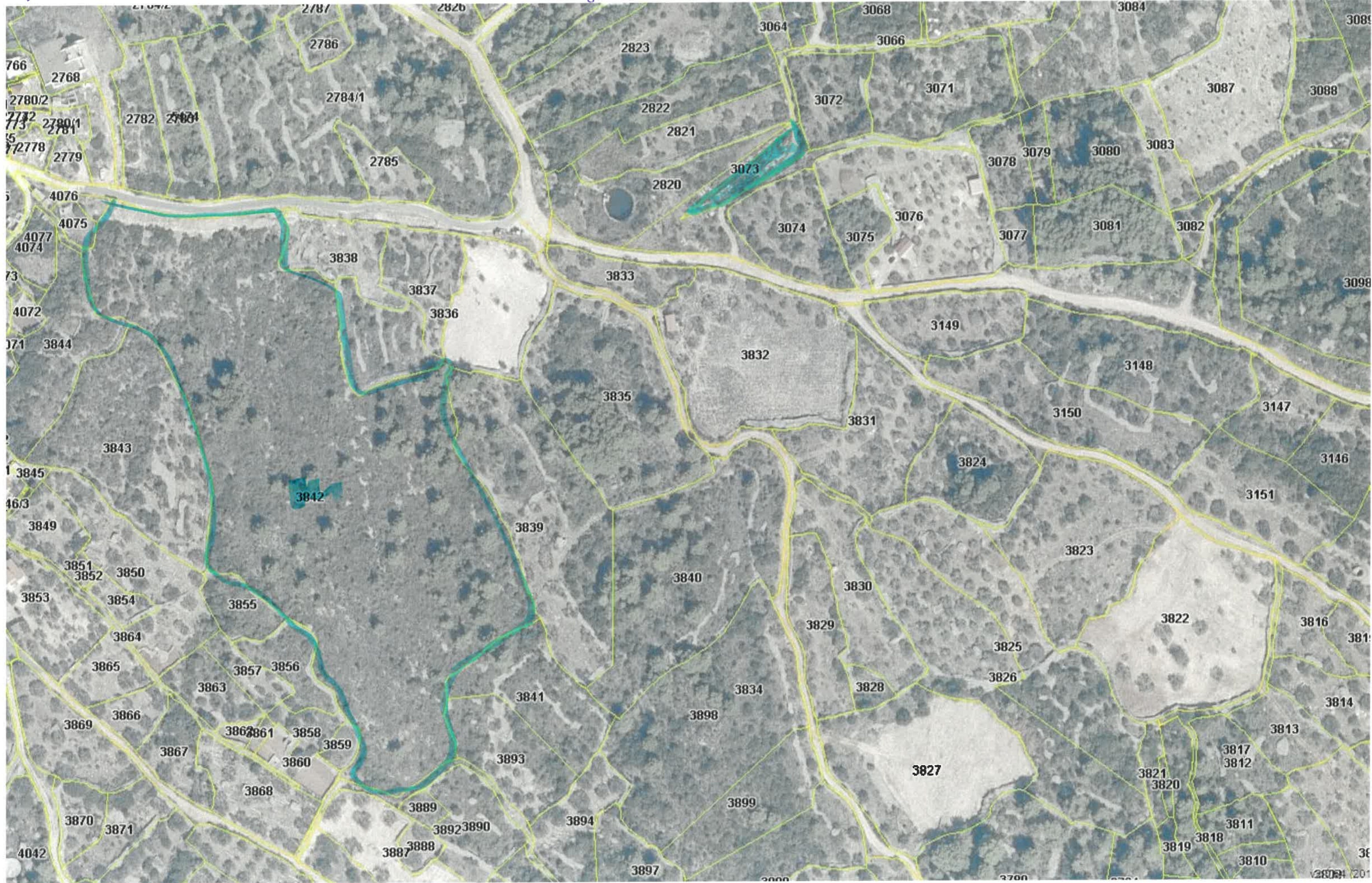
R.B. 34

GORNJE SELO K. E. 1474



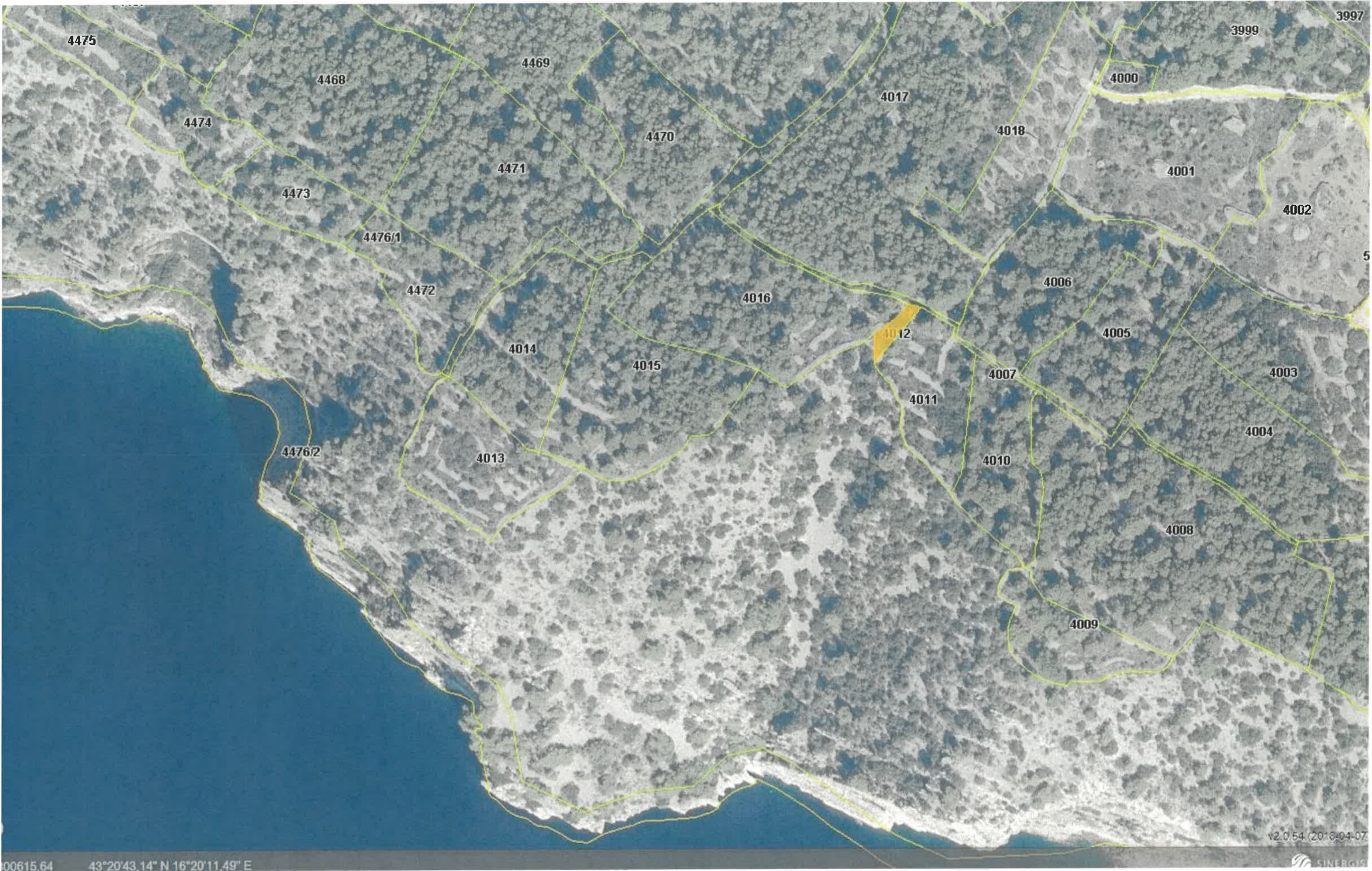
L.M. 35-36

Gornji selo k.c. 3073 i 3842



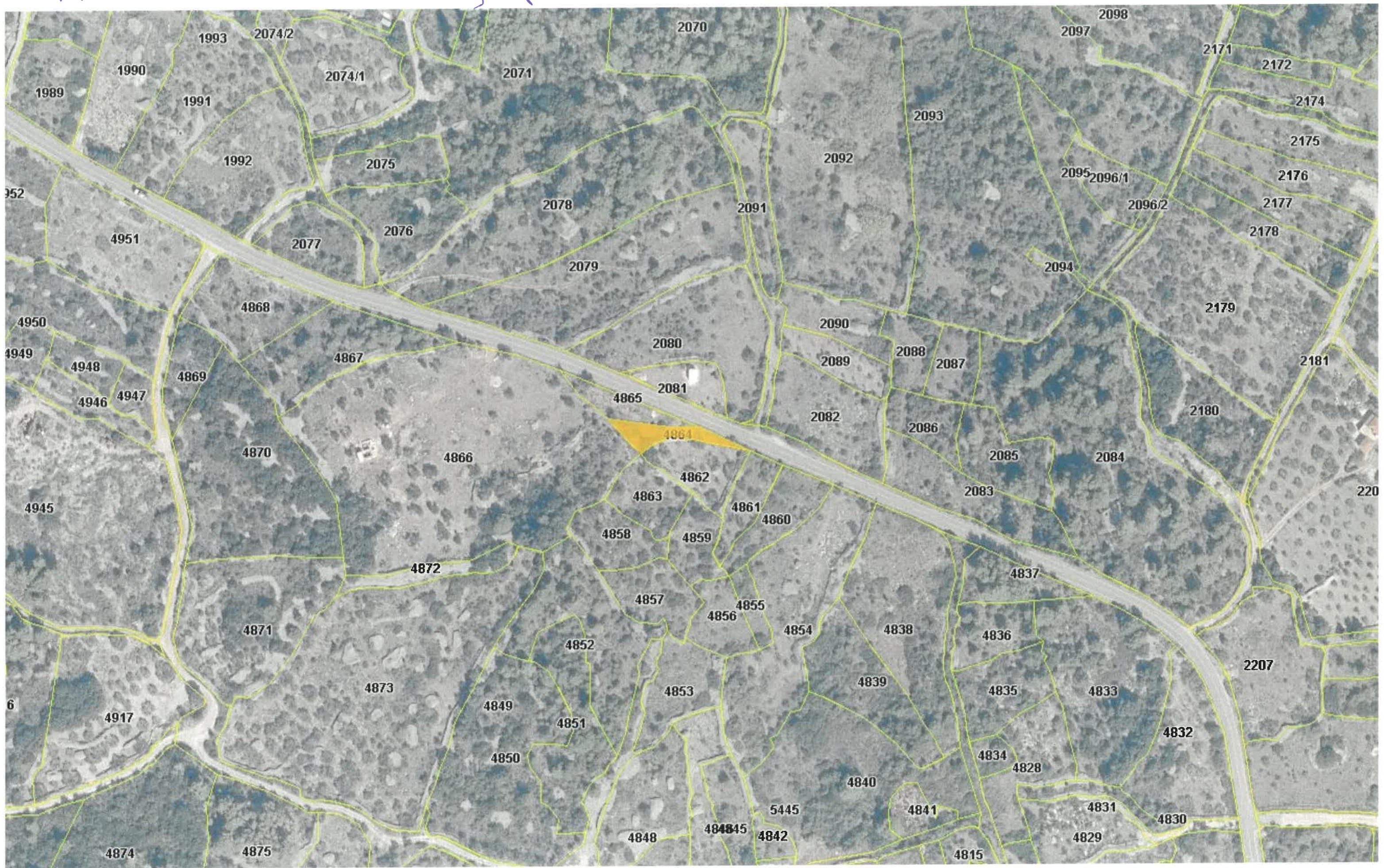
R.B. 37

GORNJE Selo k.č. 4012



R. B. 38

Gornje selo k. č. 4864



R.B. 39

OROTONE E.C. 6144

